

**deep soil / existing mature canopy trees**

EXISTING MATURE CANOPY NATIVE TREES ALONG NORTHERN BOUNDARY SHALL BE RETAINED AND PROTECTED IN ACCORDANCE WITH ARBORICULTURAL RECOMMENDATIONS. SELECTED TREES THAT ARE ADVERSELY IMPACTED BY PROPOSED WORKS OR THAT HAVE A LOW USEFUL LIFE EXPECTANCY ARE PROPOSED FOR REMOVAL. NEW UNDERSTORY PLANTING SHALL INCLUDE SPECIES FROM:

- BLUE GUM HIGH FOREST
- SYDNEY TURPENTINE - IRONBARK FOREST
- SYNGARIA GLOMULIFERA (Turpentine)
- FICUS CORONATA (Sandpaper Fig)
- ELAEAGARUS RETICULATUS (Blushberry Ash)
- BACKHOUSIA MYRTIFOLIA (Grey Myrtle)
- TRISTANOPSIS LAURINA (Water Gum)
- INDIGOPHERA AUSTRALIS (Australian Indigo)
- BURSARIA SPINOSA (Sweet Bursaria)
- HARDENBERGIA VIOLEACEAE (Native Scurfgrass)
- CYATHEA AUSTRALIS (Black Tree Fern)

**lawn + native garden**

LAWN WILL BE BORDERED BY AN ACCESSIBLE PATHWAY AND EXISTING TREES UNDERPLANTED WITH A VARIETY OF SHADE TOLERANT SHRUBS AND SMALL TREES INCLUDING LOCALLY INDIGENOUS B.G.H.F. AND S.T.F. SPECIES. INFORMAL SEATING SHALL BE PROVIDED.

**accessible pathway**

1500mm WIDE ACCESSIBLE PATHWAY SHALL BE PROVIDED THROUGHOUT NORTHERN + NORTH-EASTERN GARDEN TO PROVIDE OPPORTUNITIES FOR INFORMAL RECREATION WITHIN BUSHLAND GARDEN.

**lower ground level courtyard**

NORTHERN COURTYARD 3 WITH DEEP SOIL PLANTERS CAPABLE OF SUPPORTING FEATURE TREES. COURTYARD TO INCORPORATE SEATING TO ENCOURAGE RESIDENTS' USE WHILE AFFORDING VIEWS OUT INTO THE LANDSCAPE.

KOELREUTERIA PANICULATA (Golden Rain Tree)

**lounge / dining area addressing native garden**

NORTHERN LOUNGE WITH GLASS DOORS + WINDOWS OFFERING VIEWS INTO THE LANDSCAPE. GARDEN TO INCLUDE A STIMULATING RANGE OF FOLIAGE PLANTS INCLUDING SUITABLE NATIVE SPECIES AND A WATER FEATURE.

**LANDSCAPE DESIGN PRINCIPLES**

- TO COMPLEMENT AND ENHANCE THE EXISTING STREETSCAPE**
  - PROPOSED PLANTING DESIGNED TO PROVIDE LANDSCAPE FOLIAGE WHICH REFLECT AND HARMONISE WITH EXISTING STREETSCAPE AND TO CREATE A DISTINCT LANDSCAPE CHARACTER.
  - CANOPY TREES WITHIN FRONT BUILDING SETBACK (EUCALYPTUS RACEMOSA, ACICIA SMITHII, KOELREUTERIA PANICULATA, PHOENIX CANARIENSIS) SELECTED TO SCREEN + SOFTEN THE BUILT FORM AND PROVIDE CONSISTENCY WITH THE LOCALITY.
  - THE STREETFRONT PLANTING OFFERS VARIOUS FORMS TO CREATE A RHYTHM REFLECTING TYPICAL SUBURBAN FRONTAGE SIZES FOR THE STREET.
  - A COMBINATION OF FOLIAGE AND FLOWERING SPECIES ARE DESIGNED TO ENHANCE THE PEDESTRIAN EXPERIENCE IN BURDETT STREET.
  - NEW STREET TREES (EUCALYPTUS RACEMOSA) PROPOSED TO MATCH EXISTING STREET TREES IN BURDETT STREET.
- TO REDUCE THE IMPACT OF THE BUILT FORM**
  - CANOPY TREES AND UNDERSTORY PLANTING PROPOSED TO PROVIDE SCALE AND SOFTEN THE BUILT FORM, PRESENTING THE DEVELOPMENT WITHIN A VEGETATED SETTING AND MINIMISING THE VISUAL IMPACT.
  - ALL CARPARKING IS PROPOSED TO BE PROVIDED UNDERGROUND TO REDUCE THE VISUAL IMPACT OF DEVELOPMENT AND REDUCE IMPACT ON STREET AND ADJOINING PROPERTIES.
- TO PROTECT EXISTING TREES**
  - ALL TREES IDENTIFIED AS SUITABLE FOR RETENTION IN ARBORICULTURAL ASSESSMENT SHALL BE RETAINED AND PROTECTED TO PROVIDE FUTURE BENEFIT.
  - SUITABLE MATURE PALMS HAVE BEEN IDENTIFIED TO BE TRANSPLANTED DIRECTLY INTO THE FUTURE LANDSCAPE.
- TO PROVIDE DEEP SOIL PLANTING**
  - AREAS OF DEEP SOIL PLANTING HAVE BEEN PROVIDED ON ALL BOUNDARIES, PROVIDING A MINIMUM OF 1200mm ROOT AREA PER TREE INTO NATURAL GROUND.
- TO REPLENISH INDIGENOUS TREE CANOPY + COMPENSATE FOR TREE REMOVAL**
  - IN ADDITION TO EXOTIC TREES PROPOSED, THE FOLLOWING INDIGENOUS TREES FROM THE BLUE GUM HIGH FOREST / STONEY TURPENTINE-IRONBARK FOREST HAVE BEEN PROPOSED TO COMPENSATE FOR TREES TO BE REMOVED AND TO REPLENISH NEIGHBOURHOOD TREE CANOPY: SYNGARIA GLOMULIFERA (1), TURPENTINE (1), ELAEAGARUS RETICULATUS (1), BLUSHBERRY ASH (1), ACICIA SMITHII (1), LILLYPILLY (1), FICUS CORONATA (1), SANDPAPER FIG (2), TRISTANOPSIS LAURINA (1), WATER GUM (1), BACKHOUSIA MYRTIFOLIA (1), GREY MYRTLE (2).
- TO CREATE A LANDSCAPE AS AN EXTENSION OF INTERNAL SPACES**
  - PERIMETER LAWNS + GARDENS ARE DESIGNED TO ENCOURAGE GENTLE EXERCISE AND FACILITATE FLEXIBLE OUTDOOR RECREATION WITH VIEWS.
  - EXTENDED VIEWS INTO THE GARDEN HAVE BEEN CONSIDERED TO ENHANCE DAILY LIFE FOR LESS ACTIVE RESIDENTS.
  - INTERNAL COURTYARDS OFFER LEARY OUTLOOKS FROM PRIVATE RESIDENTIAL ROOMS AND EASILY ACCESSIBLE OUTDOOR SEATING AREAS.
  - OUTDOOR DINING AREAS AND TERRACES PROVIDE EXTENDED VIEWS INTO THE GARDEN.
- TO ENCOURAGE CASUAL COMMUNAL + VISITOR ACTIVITIES**
  - COMMUNAL / FAMILY ACTIVITIES ENCOURAGED BY THE PROVISION OF OUTDOOR DINING TERRACES, COMMUNAL BBQ FACILITIES, GARDEN SEATING IN SUN AND SHADE, BIRD ATTRACTING NATIVE GARDEN AREA, EASILY ACCESSIBLE INTERNAL COURTYARDS, WATER FEATURES.
- TO PROVIDE SAFE, STIMULATING GARDEN AREA FOR DEMENTIA + LESS MOBILE RESIDENTS**
  - FENCED THERAPEUTIC GARDEN DESIGNED WITH A VARIETY OF SPECIES FORM, COLOUR + TEXTURE TO PROVIDE STIMULATING SETTING FOR DEMENTIA RESIDENTS. EASILY ACCESSIBLE AREA HAS BEEN DESIGNED TO BE FLEXIBLE FOR STROLLING, QUIET SITTING + SUPERVISED ACTIVITIES.
- TO MAXIMISE SOLAR ACCESS TO ROOMS + GARDEN AREAS**
  - MAINTAINED LOW GROUND COVER AND DECIDUOUS TREES HAVE BEEN DESIGNED TO PROVIDE SCREENING WHITE FACILITATING MAXIMUM WINTER SOLAR ACCESS, PARTICULARLY TO PRIVATE ROOMS AND GARDEN SITTING AREAS (e.g. THERAPEUTIC GARDEN, BIRD CORRIDOR). INTERNAL COURTYARD 1, 2 + 3 HAVE BEEN WIDENED TO PROVIDE ADDITIONAL OPPORTUNITIES FOR SEATING IN SEASONAL SUNNY AREAS.
- TO MAINTAIN NEIGHBOUR PRIVACY + AMENITY**
  - SCREEN PLANTING CONSISTING OF PRINCIPALLY FAST GROWING NATIVE SPECIES IS PROPOSED TO PROVIDE BOUNDARY PRIVACY SCREENING AS REQUIRED.
- TO INCLUDE SHADE TREE AND FEATURE TREES FOR SEASONAL INTEREST**
  - A VARIETY OF EVERGREEN + DECIDUOUS TREES PROPOSED TO PROVIDE SEASONAL FLOWERS, SUMMER SHADE AND MAXIMISE ON WINTER SOLAR ACCESS.
- TO ENHANCE THE GARDEN EXPERIENCE FOR ALL RESIDENTS**
  - SPECIES SELECTION HAVE BEEN MADE WITH CONSIDERATION OF SITE CONDITIONS AND TO PROVIDE A STIMULATING RANGE OF FLOWER AND FOLIAGE TEXTURES AND COLOURS TO ENCOURAGE RESIDENTS' USE OF LANDSCAPE SPACE. NATIVES INCLUDE:
    - EXTENDED LAWNS + GARDENS
    - OUTDOOR SEATING IN SUN + SHADE
    - YEAR ROUND COLOUR
    - NOSTALGIC / THERAPEUTIC GARDEN
    - NATIVE GARDEN
    - GARDEN SCULPTURES
    - PERGOLAS
    - BARBECUE
    - ACCESSIBLE PATHS
    - WATER FEATURES
    - FLOWERING TREES + SHRUBS
    - CASCADING CLIMBERS OVER WALLS
- TO PROVIDE FOR ACCESSIBLE USE OF GARDEN**
  - ACCESSIBLE PATHWAYS HAVE BEEN PROVIDED AS REQUIRED BY RELEVANT GUIDELINES TO ENSURE MAXIMUM POTENTIAL FOR OUTDOOR RESIDENT USE.
  - SAFETY MEASURES INCLUDING SURFACE SELECTION, GENTLE GRADIENTS, APPROPRIATE SEATING, HANDRAILS AND FENCING SHALL BE INCORPORATED.
- TO COMPLY WITH DESIGN PRINCIPLES OF SEPP**
  - THE PROPOSED LANDSCAPE AIMS TO MEET THE DESIGN PRINCIPLES OF THE RELEVANT SEPP (HOUSING FOR SENIORS OR PEOPLE WITH A DISABILITY) 2004.
  - REFER TO ARCHITECTURAL PLANS FOR DEEP SOIL AND SITE CALCULATIONS.

LEGEND			
PROPOSED LEVELS	OPEN METAL RAILINGS FRONT FENCE	TILED COURTYARDS + GARDEN PATHS	SELECTED GARDEN SCULPTURES
EXISTING SPOT LEVELS	MASONRY RETAINING WALLS / PLANTERS	SELECTED GRAVEL MULCH	BIRD BATH OR SIMILAR GARDEN FEATURE
EXISTING TREES TO BE REMOVED	STONE GARDEN EDGES	LAWN AREAS (SYNTHETIC TURF IN THERAPY GARDENS)	INFORMAL GARDEN SEATING
EXISTING TREES TO BE RETAINED ON SITE	STONE FEATURE WALLS	CONCRETE DRIVEWAY	BASED PLANTERS (DEPTH SHOWN ON L03)
EXISTING TREES TO BE RETAINED OFF SITE	BOUNDARY	SELECTED WATER FEATURES	WATER FEATURES



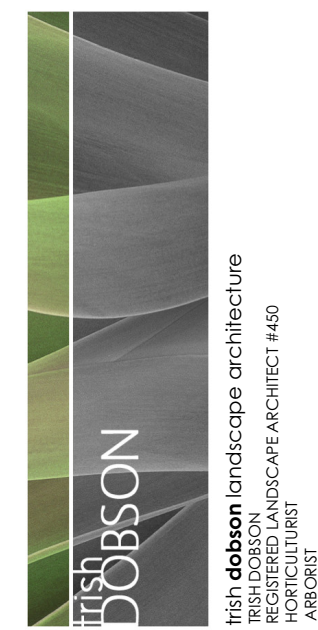
**LANDSCAPE SITE PLAN**

SCALE: 1:200 @ A1  
REFER TO L02 TREE RETENTION PLAN FOR EXISTING TREE SCHEDULE  
REFER TO L03 PLANTING PLAN FOR PLANTING DETAILS

**NOTE**  
PLAN TO BE READ IN CONJUNCTION WITH:  
ARCHITECTURAL PLANS BY GARTNER TROVATO ARCHITECTS  
ARBOICULTURAL IMPACT ASSESSMENT BY HAINTREE CONSULTING

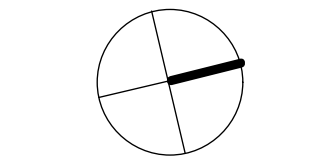
0m 2m 4m 6m 8m 10m

AMENDMENTS  
Rev A 22.10.20  
Building Footprint amended  
Driveway + Planters amended  
Bird Corridor added  
Communal BBQ Area added  
L02 Courtyard amended + revised  
Additional Deep Soil Areas  
GF Lawn Outdoor Terraces added



Irish dobson landscape architecture  
5/57 AVALON PARADE AVALON NSW 2107  
(0883 98320)  
irish@irishdobson.com.au

© IRISH DOBSON LANDSCAPE ARCHITECTURE  
BUILDING TO EXISTING ALL DIMENSIONS PRIOR TO CONSTRUCTION  
WHERE AN DISCREPANCY EXISTS BETWEEN PROVIDED AND EXISTING DIMENSIONS, THE PROVIDED DIMENSIONS SHALL PREVAIL.



CLIENT  
Thompsons Health Care

PROJECT  
AGED CARE FACILITY  
65-71 BURDETT STREET  
HORNSBY

DRAWING  
**LANDSCAPE SITE PLAN**

SCALE 1:200@A1  
DATE 5.3.20  
ISSUE DA  
SHEET 1 of 8  
REVISION A revised 22.10.20

JOB  
1919  
DWG NO  
DA-L01A










## TREE RETENTION PLAN

SCALE 1:200 @ A1

NOTE  
PLAN TO BE READ IN CONJUNCTION WITH:  
ARCHITECTURAL PLANS BY GARTNER TRIVATO ARCHITECTS  
ARBORESCULE IMPACT ASSESSMENT BY RAIN TREE CONSULTING

0m 2m 4m 6m 8m 10m

## LEGEND

	PROPOSED LEVELS		EXISTING TREES TO BE RETAINED ON SITE		SWEPT TREES NO LONGER LOCATED ON SITE
	EXISTING SPOT LEVELS		EXISTING TREES TO BE RETAINED OFF SITE		
	EXISTING TREES TO BE REMOVED		EXISTING PALMS TO BE TRANSPLANTED		

## TREE RETENTION AIMS

THE LANDSCAPE DESIGN FOR THE SITE AIMS TO RETAIN EXISTING TREES WHEREVER POSSIBLE WITH A PRIORITY BEING:

- TO REMOVE ONLY THOSE TREES LOCATED WITHIN THE FOOTPRINT OF THE PROPOSED BUILDING OR DRIVEWAY OR THOSE TREES DEEMED BY THE PROJECT ARBORIST TO BE UNSTABLE BEYOND THEIR USEFUL LIFE EXPECTANCY / SENSICENT, OR THOSE TREES IDENTIFIED AS EXEMPT FROM PROTECTION UNDER HORNBY DCP.
- TO RETAIN A SUBSTANTIAL GROUP OF NATIVE TREES ALONG THE NORTHERN BOUNDARY WHICH INCLUDES SEVERAL MATURE TREES FROM THE BLUE GUM HIGH FOREST AND SYDNEY TURPENTINE/IRONBARK FOREST COMMUNITIES.
- TO RETAIN TREES ALONG BOUNDARIES ADJOINING NEIGHBOURS' RESIDENCES TO PROVIDE PRIVACY.
- TO TRANSPLANT SUITABLE MATURE PALM TREES REQUIRED TO BE REMOVED FOR THE DEVELOPMENT ELSEWHERE ON SITE SO THAT THEY CAN PROVIDE AN ESTABLISHED CONTRIBUTION TO THE FUTURE LANDSCAPE AREAS OF THE AGED FACILITY.
- TO RETAIN EXISTING SCREEN SHRUBS AND UNDERSTOREY PLANTS NOT IDENTIFIED BY SURVEY OR ARBORIST REPORT DUE TO HEIGHT BUT CAPABLE OF PROVIDING VALUABLE PRIVACY SCREENING ALONG NEIGHBOURING PROPERTY BOUNDARIES.

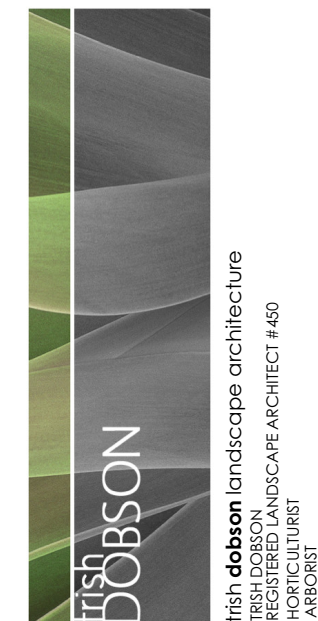
THE LANDSCAPE PLANS HAVE BEEN INFORMED BY THE DETAILED ARBORESCULE REPORT PREPARED BY RAIN TREE CONSULTING. TREES NUMBERS ALLOCATED IN THE ARBORESCULE REPORT HAVE BEEN USED ON LANDSCAPE PLANS. SEVERAL YOUNG TREES CONSIDERED USEFUL FOR RETENTION AND NOT SHOWN ON SURVEY HAVE ALSO BEEN INCLUDED ON LANDSCAPE PLANS.

## EXISTING TREE SCHEDULE

TREE NO.	SPECIES	COMMON NAME	D.B.H.	Height	Spread	T.P.Z.	Status
T1	JACARANDA MIMOSIFOLIA	JACARANDA	3 x 100mm	11m	10m	10.8m	Remove for Works
T2	MAUS RUMONDA	COCONUT PALM	350mm	5m	4m	4.2m	Remove for Works
T3	STAGLIUS ROMANZOFIUM	COCONUT PALM	350mm	10m	7m	4.2m	Remove - Exempt
T4	HYDROPHORUS LAGENICULUS	BOTTLE PALM	250mm	2.5m	3m	2.5m	Remove - Exempt
T5	PHOENIX CANARIENSIS	PHOENIX PALM	250mm	1.5m	3m	2.5m	Remove - Exempt
T6	PALMERIA RUBRA	FRANGIPANI	250mm	4m	3m	3m	Remove - Exempt
T7	STAGLIUS ROMANZOFIUM	COCONUT PALM	350mm	7m	6m	4m	Remove - Exempt
T8	STAGLIUS ROMANZOFIUM	COCONUT PALM	350mm	8m	6m	4m	Remove - Exempt
T9	STAGLIUS ROMANZOFIUM	COCONUT PALM	350mm	10m	7m	4.5m	Remove - Exempt
T10	MACADAMIA INTEGRIFOLIA	MACADAMIA	250mm	6m	4m	3.6m	Remove for Works
T11	FRAXINUS SP.	ASH	450mm	11m	14m	5.4m	Remove for Works
T12	BRACHYCHITON ACERIFOLIUS	ILLAWARRA FLAME	500mm	12m	5m	6m	Remove for Works
T13	STAGLIUS ROMANZOFIUM	COCONUT PALM	250mm	11m	6m	4m	Remove - Exempt
T14	ARCHONTOPHOENIX SP.	BANGALOW PALM	50,220,170mm	10m	5m	3.5m	Remove for Works
T15	MOULUS NIGRA	PLUMBERY	550mm	4m	3m	3.5m	Remove - Exempt
T16	PHOENIX CANARIENSIS	CANARY IS PALM	400mm	6m	6m	4m	Transplant
T17	SAPULUM SEBERLUM	CHINESE TALLOWWOOD	350mm	8m	6m	4.2m	Remove for Works
T18	ARAUCARIA HETEROPHYLLA	NORFOLK IS. PINE	400mm	11m	6m	4.8m	Remove for Works
T19	HYMENOPHYLLUM FLAVUM	NATIVE FRANGIPANI	400mm	9m	5m	4.8m	Remove for Works
T20	STYGLIUM LIEHMANNII	SMALL LEAF LILLYPILLY	150,200mm	7m	5m	4.2m	Remove for Works
T21	MACADAMIA INTEGRIFOLIA	MACADAMIA	150,200mm	6m	5m	4.2m	Remove for Works
T22	ARCHONTOPHOENIX SP.	BANGALOW PALM	150mm	2.5m	3m	2.5m	Retain + Protect
T23	ARCHONTOPHOENIX SP.	BANGALOW PALM	150mm	7m	3m	2.5m	Retain + Protect
T24	ARCHONTOPHOENIX SP.	BANGALOW PALM	150mm	6m	3m	2.5m	Retain + Protect
T25	STAGLIUS ROMANZOFIUM	COCONUT PALM	200mm	12m	6m	4m	Retain + Protect
T26	STAGLIUS ROMANZOFIUM	COCONUT PALM	300mm	10m	6m	4m	Retain + Protect
T27	MICHELIA CHAMPACA	CHAMPACK MAGNOLIA	200mm	8m	6m	2.4m	Retain + Protect
T28	NOT LOCATED						
T29	SCHERERBIA ACTINOPHYLLA	AUST. UMBRELLA TREE	400mm	7m	7m	7.2m	Retain + Protect
T30	JACARANDA MIMOSIFOLIA	JACARANDA	400mm	15m	11m	4.8m	Retain + Protect
T31	JACARANDA MIMOSIFOLIA	JACARANDA	230,150mm	15m	13m	7.2m	Retain + Protect
T32	PHOENIX CANARIENSIS	CANARY IS. PALM	750mm	1m	3m	3.5m	Remove for works
T33	NOT LOCATED						
T34	JACARANDA MIMOSIFOLIA	JACARANDA	200mm	14m	14m	9m	Retain + Protect
T35	ERIOBOTRYA JAPONICA	LOQUAT	200mm	8m	5m	2.4m	Retain + Protect
T36	ERIOBOTRYA JAPONICA	LOQUAT	200mm	6m	7m	2.4m	Retain + Protect
T37	NOT LOCATED						
T38	ANNONIA ALTHOFFIA	CUSTARD APPLE TREE	200mm	6m	5m	2.4m	Retain + Protect
T39	PITTOSPORUM UNDOULATUM	NATIVE DAPHNE	250mm	3m	3m	3m	Retain + Protect
T40	LOQUATUM SINENSE	SMALL LEAF PRIVET	200mm	4m	4m	2.4m	Remove - Exempt
T41	STAGLIUS ROMANZOFIUM	COCONUT PALM	300mm	7m	6m	3m	Remove - Exempt
T42	LOQUATUM SINENSE	BROAD LEAF PRIVET	250mm	8m	5m	3m	Remove - Exempt
T43-47	NOT LOCATED						
T48	CUPRESSUS SEMPERVIRENS	COLLUM CYPRUS	150mm	8m	1.5m	2m	Retain + Protect
T49	CUPRESSUS SEMPERVIRENS	LETLAND CYPRUS	300mm	7m	3m	3.6m	Retain + Protect
T50	CUPRESSUS SEMPERVIRENS	LETLAND CYPRUS	200mm	7m	3m	2.4m	Retain + Protect
T51	CUPRESSUS SEMPERVIRENS	LETLAND CYPRUS	200mm	6m	4m	2.4m	Retain + Protect
T52	CUPRESSUS SEMPERVIRENS	LETLAND CYPRUS	250mm	7m	4m	2.4m	Retain + Protect
T53	NOT LOCATED						
T54	PRINUS RADATA	MONTREY PINE	100mm	24m	26m	12m	Retain + Protect
T55	EUCALYPTUS HAEMASTOMA	SCRIBBLY GUM	500mm	7m	4m	6m	Retain + Protect

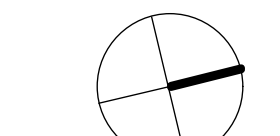
T56	CINNAMOMUM CAMPHORA	CAMPOR LAUREL	950mm	17m	16m	11.4m	Retain + Protect
T57	SYNCAPIA GLOMERIFERA	TURPENTINE	450mm	16m	11m	7.8m	Remove for Works
T58	CALLISTEMON SAUNIGUS	WILLOW BOTTLEBRUSH	300mm	12m	8m	10.8m	Remove for Works
T59	CALLISTEMON SAUNIGUS	WILLOW BOTTLEBRUSH	400mm	9m	7m	4.8m	Remove for Works
T60	ACHENNA SMITHII	LILLYPILLY	200mm	9m	5m	2.4m	Remove for Works
T61	HYMENOPHYLLUM FLAVUM	NATIVE FRANGIPANI	150mm	6m	3m	2m	Remove for Works
T62	ARCHONTOPHOENIX SP.	BANGALOW PALM	2 x 200mm	7m	3m	1.5m	Remove for Works
T63	CORYMBIA MACULATA	SPOTTED GUM	400mm	23m	11m	7.2m	Remove - Hazardous
T64	ARCHONTOPHOENIX SP.	BANGALOW PALM	200mm	10m	3m	2.5m	Retain + Protect
T65	ARCHONTOPHOENIX SP.	BANGALOW PALM	150mm	3m	3m	2.5m	Remove - Exempt
T66	ARCHONTOPHOENIX SP.	BANGALOW PALM	2 x 200mm	7m	4m	3m	Remove - Exempt
T67	ARCHONTOPHOENIX SP.	BANGALOW PALM	200mm	7m	4m	3m	Remove - Exempt
T68	CALLISTEMON SAUNIGUS	WILLOW BOTTLEBRUSH	300mm	6m	3m	3.6m	Remove for Works
T69	ARCHONTOPHOENIX SP.	BANGALOW PALM	150mm	5m	3m	2.5m	Remove - Exempt
T70	SYNCAPIA GLOMERIFERA	TURPENTINE	500mm	16m	9m	6m	Retain + Protect
T71	CALLISTEMON SAUNIGUS	WILLOW BOTTLEBRUSH	100,150m	10m	7m	-	Retain + Protect
T72	EUCALYPTUS SP.	DEAD TREE	1000mm	16m	9m	-	Remove - Dead
T73	SYNCAPIA GLOMERIFERA	TURPENTINE	550mm	20m	13m	6.6m	Retain + Protect
T74	CORYMBIA MACULATA	SPOTTED GUM	750mm	28m	14m	9m	Retain + Protect
T75	SYNCAPIA GLOMERIFERA	TURPENTINE	120mm	8m	3m	-	Retain + Protect
T76	SYNCAPIA GLOMERIFERA	TURPENTINE	450,400mm	22m	12m	6.6m	Retain + Protect
T77	PITTOSPORUM UNDOULATUM	SWEET PITTOPOURUM	200mm	5m	2m	2.4m	Retain + Protect
T78	SYNCAPIA GLOMERIFERA	TURPENTINE	150mm	20m	12m	6.6m	Retain + Protect
T79	CORYMBIA CITRIFOLIA	LEMON SCENTED GUM	700mm	23m	15m	8.4m	Retain + Protect
T80	LEPTOSPERMUM PETERSONII	LEMON SCENTED TEA TREE	450mm	8m	5m	5.4m	Remove - Defective
T81	LEPTOSPERMUM PETERSONII	LEMON SCENTED TEA TREE	300mm	7m	5m	5.4m	Remove - Defective
T82	CORYMBIA MACULATA	SPOTTED GUM	700mm	22m	15m	8.4m	Retain + Protect
T83	CALLISTEMON SAUNIGUS	WILLOW BOTTLEBRUSH	250mm	9m	5m	3m	Retain + Protect
T84	PITTOSPORUM UNDOULATUM	SWEET PITTOPOURUM	200mm	4m	4m	2.4m	Retain + Protect
T85	LYSTONIA AUSTRALIS	CABBAGE TREE PALM	300mm	6m	4m	3m	Transplant on Site
T86	NYSSA SYLVATICA	TULIPO	200mm	5m	6m	2.4m	Remove for Works
T87	MAULUS SP.	CHAMPACK	300mm	8m	9m	4m	Remove for Works
T88	HEILA AZIDARACH	WHITE CEDAR	800mm	15m	12m	9.6m	Remove for Works
T89	SYNCAPIA GLOMERIFERA	TURPENTINE	350mm	14m	9m	4.2m	Retain + Protect
T90	BRACHYCHITON ACERIFOLIUS	ILLAWARRA FLAME	300mm	13m	9m	3.6m	Retain + Protect
T91	PITTOSPORUM UNDOULATUM	SWEET PITTOPOURUM	150mm	7m	3m	2.4m	Retain + Protect
T92	LEPTOSPERMUM PETERSONII	LEMON SCENTED TEA TREE	350mm	10m	7m	4.2m	Remove - Defective
T93	PITTOSPORUM UNDOULATUM	SWEET PITTOPOURUM	350mm	6m	6m	4.2m	Retain + Protect
T94	SYNCAPIA GLOMERIFERA	TURPENTINE	80mm	15m	13m	3.6m	Retain + Protect
T95	CARYA ALUNDENSIS	PECAN	2 x 200mm	20m	12m	8.4m	Remove for Works
T96	CORYMBIA MACULATA	SPOTTED GUM	250mm	25m	17m	8.4m	Retain + Protect
T97	LEPTOSPERMUM PETERSONII	LEMON SCENTED TEA TREE	250mm	7m	6m	3m	Retain + Protect
T98	LEPTOSPERMUM PETERSONII	SWEET PITTOPOURUM	200,150mm	9m	7m	4.2m	Retain + Protect
T99	SYNCAPIA GLOMERIFERA	TURPENTINE	350mm	14m	1m	4.2m	Retain + Protect
T100	CORYMBIA MACULATA	SPOTTED GUM	500mm	24m	11m	6m	Retain + Protect
T101	SYNCAPIA GLOMERIFERA	TURPENTINE	450mm	15m	9m	5.4m	Retain + Protect
T102	ARCHONTOPHOENIX SP.	BANGALOW PALM	150 av. mm	3 av. m	2.5m	Retain + Protect	
T103	CORYMBIA MACULATA	SPOTTED GUM	1000mm	24m	17m	12m	Retain + Protect
T104	STAGIUS ROMANZOFIUM	COCONUT PALM	250mm	10m	6m	4m	Retain + Protect
T105	CALLISTEMON SAUNIGUS	WILLOW BOTTLEBRUSH	500mm	8m	6m	4.8m	Remove for Works
T106	JACARANDA MIMOSIFOLIA	JACARANDA	400mm	11m	14m	7.2m	Retain + Protect
T107	ARCHONTOPHOENIX SP.	BANGALOW PALM	200mm	13m	4m	3m	Retain + Protect

AMENDMENTS  
Rev A - 22.10.20 Building Footprint Amended



Irish Dobson landscape architecture  
3/57 AVALON PARADE AVALON NSW 2107  
0408 983020  
irish@irishdobson.com.au

© IRISH DOBSON LANDSCAPE ARCHITECTURE  
DESIGNED TO COMPLY WITH ALL DIMENSIONS PRIOR TO  
CONSTRUCTION  
UNLESS ANY DISCREPANCY EXISTS BETWEEN  
THESE AND THE DIMENSIONS OF THE BUILDING  
DIMENSIONS SHALL PREVAIL.



CLIENT  
Thompsons Health Care

PROJECT  
AGED CARE FACILITY  
65-71 BURDETT STREET  
HORNSBY

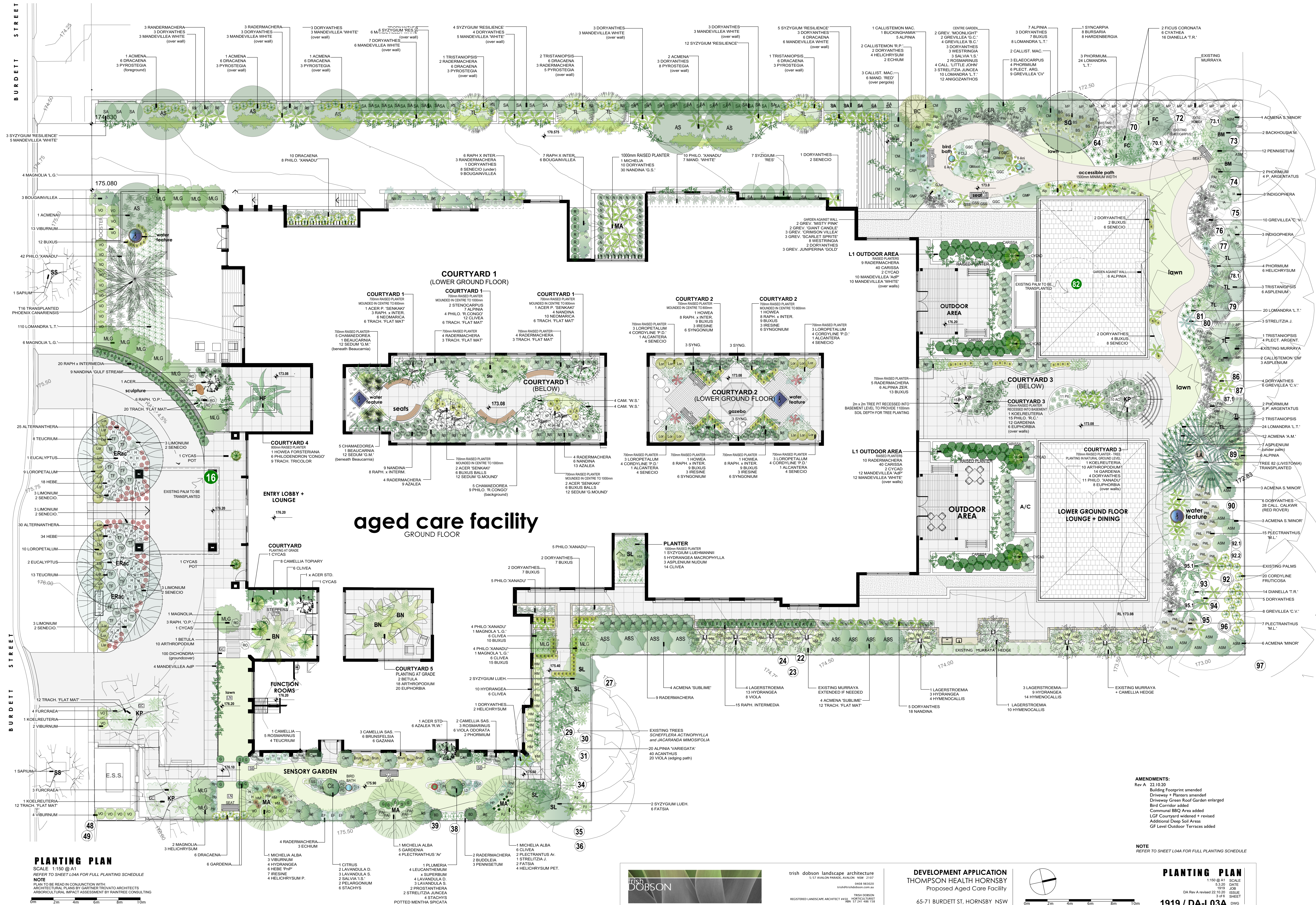
DRAWING

## TREE RETENTION PLAN

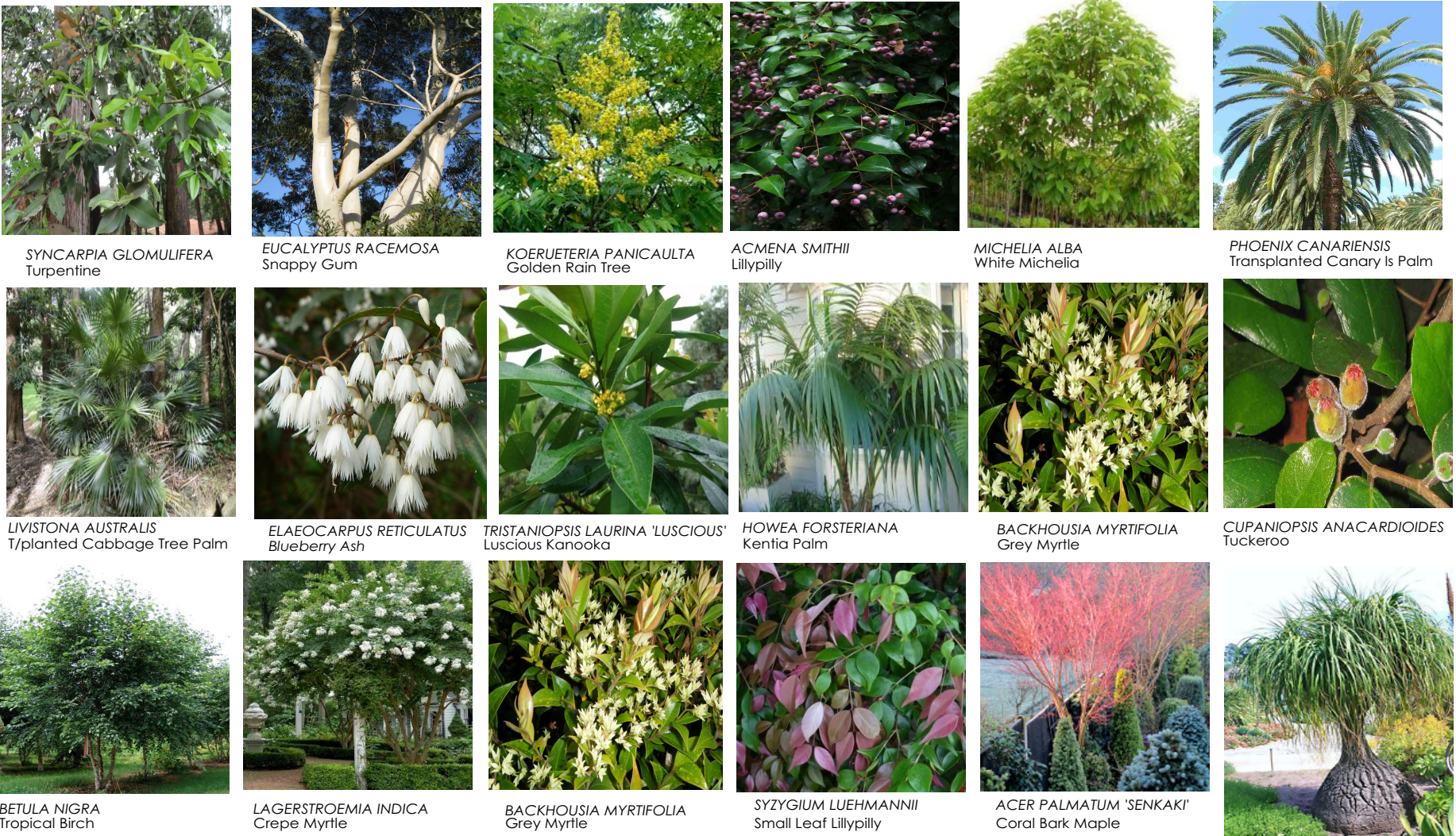
SCALE 1:200@A1  
DATE 6.3.20 (Rev A 22.10.20)  
ISSUE DA  
SHEET 2 of 6

JOB  
DWG NO  
1919  
DA-L02A

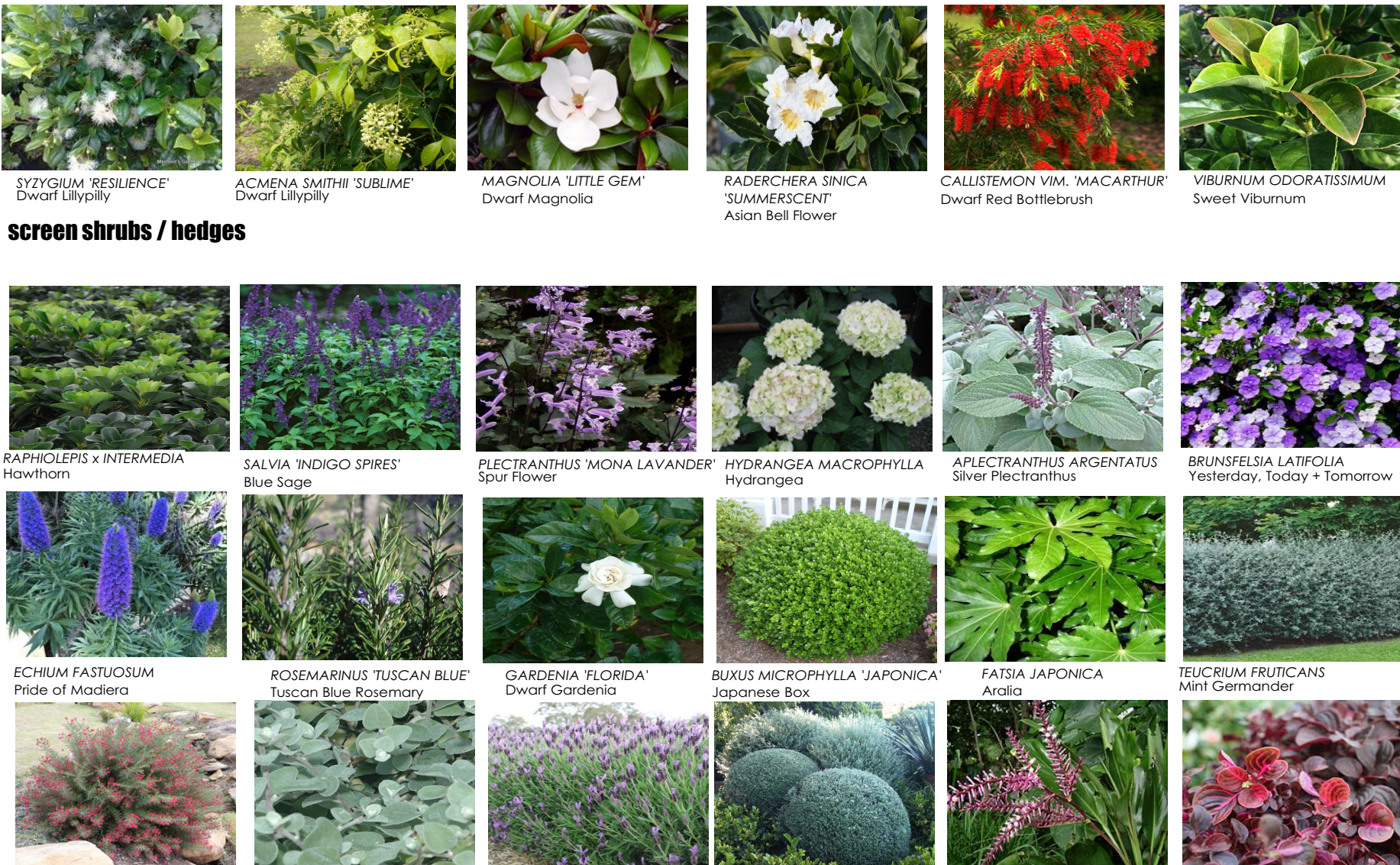








trees + palms



small foliage / flowering shrubs



accents + foliage plants



groundcovers, climbers + grasses

## PLANTING SCHEDULE - GROUND FLOOR

SPECIES HAVE BEEN SELECTED ON THE BASIS OF DESIGN INTENT AND SUITABILITY TO SITE CONDITIONS. PLAN INCLUDES TREE SPECIES FROM BLUE GUM HIGH FOREST + SYDNEY TURPENTINE/IRONBARK FOREST SHRUB AND FOLIAGE PLANTS HAVE BEEN SELECTED TO PROVIDE STIMULATING VARIETY OF SEASONAL COLOUR AND FLOWER AND INCLUDE NATIVES SPECIES AND NOSTAIGIC / EXOTIC FLOWERING SHRUBS. SUB-TROPICAL SPECIES HAVE BEEN PROPOSED TO PROVIDE VARIATION OF FOLIAGE AND FOR SHADE TOLERANT CHARACTERISTICS PARTICULARLY IN COURTYARD PLANTERS.

KEY	BOTANICAL NAME	COMMON NAME	MATURE HT	No.	POT SIZE	COMMENTS
GROUND LEVEL PLANTING (INCLUDING DRIVEWAY + STREET TREES)						
<b>CANOPY TREES</b>						
AS	ACMENA SMITHII	LILLYPILLY	10m	9	75 litre	LOCAL SPECIES
ERac	EUCALYPTUS RACEMOSA	SNAPPY GUM	12m	3	75 litre	LOCAL SPECIES
KP	KOELBUTERIA PANICULATA	GOLDEN RAIN TREE	8m	2	75 litre	
LA	LIVISTONA AUSTRALIS	CABBAGE TREE PALM	10m	1	Transplant T82	Transplanted from rear No 65
MA	MICHELIA ALBA	WHITE MICHELIA	10m	4	75 litre	
PC	PHOENIX CANARIENSIS	CANARY ISLAND PALM	12m	1	Transplant T82	Transplanted from front No 69
SS	SAPALIM SIBERUM	CHINESE TAILWOOD	8m	2	200 litre	On Road Reserve
SG	SYNCARPIA GLOMULIFERA	TURPENTINE	20m	1	75 litre	LOCAL SPECIES
<b>SMALL FEATURE TREES</b>						
BH	BACKHOUSIA MYRTIFOLIA	GREY MYRTLE	6m	2	300mm	LOCAL SPECIES
BC	BUCKINGHAMIA CELCISISSIMA	IVORY CURL TREE	6m	1	75 litre	
BN	BETULA NIGRA	TROPICAL BIRCH	7m	1	75 litre	
ER	EALOCARPUS RETICULATUS	BLUEBERRY ASH	7m	3	300mm	LOCAL SPECIES
FC	FICUS CORONATA	SANDPAPER FIG	6m	2	300mm	LOCAL SPECIES
LI	LAGERSTROEMIA INDICA	NATCHEZ	5m	9	75 litre	
MLG	MAGNOLIA 'LITTLE GEM'	DWARF MAGNOLIA	3m	15	75 litre	
PR	PLUMERIA RUBRA	FRANGIPANNI	4m	1	75 litre	SENSORY GARDEN
SL	SYZYGIUM LUEHMANNII	LASANDRA	5m	5	75 litre	
TL	TRISTANOPSIS LAURINA	WATER GUM	5m	10	75 litre	LOCAL SPECIES
<b>SHRUBS</b>						
AP	ACER PALMATUM 'DISSECTUM' STD.	STANDARD WEeping MAPLE	1.4m	3	300mm	
AC	ACMENA 'ALYN MAGIC'	MINIATURE LILLYPILLY	0.6m	12	200mm	PRUNE TO THICKEN
ASH	ACMENA SMITHII 'MINOR'	DWARF LILLYPILLY	4m	13	300mm	PRUNE TO THICKEN
ASS	ACMENA SMITHII 'SUBLIME'	DWARF LILLYPILLY	6m	8	300mm	PRUNE TO TALL HEDGE
A	AZALEA 'RED WINGS'	RED AZALEA	0.5m	6	200mm	SENSORY GARDEN
BD	BUDDELEIA DAVIDII	BUTTERFLY BUSH	2m	2	200mm	SENSORY GARDEN
B	BUXUS MICROPHYLLA 'JAPONICA'	JAPANESE BOX	0.5m	64	150mm	PRUNE TO LOW HEDGE
Brn	BRUNSFELSIA LATIFOLIA	YESTERDAY TODAY TOMORROW	1m	6	200mm	SENSORY GARDEN
Bs	BURSARIA SPINOSA	GREY MYRTLE	2.5m	8	200mm	LOCAL SPECIES
CRP	CALLISTEMON 'REEVES' PINK'	PINK BOTTLEBRUSH	2.5m	2	300mm	PRUNE TO SHAPE
CM	CALLISTEMON VIM. 'MACARTHUR'	RED BOTTLEBRUSH	3m	8	300mm	PRUNE TO SHAPE
CLJ	CALLISTEMON CALDWY	RED ROVER BOTTLEBRUSH	0.6m	28	200mm	PRUNE TO LOW HEDGE
Cam	CAMELIA SASANQUA	DWARF BOTTLEBRUSH	1m	4	200mm	PRUNE TO LOW HEDGE
Cam	CAMELIA SASANQUA	SASANQUA CAMELIA	2.5m	6	300mm	SENSORY GARDEN
Cam	CAMELIA SASANQUA	ESPALEERED CAMELIA	2m	8	300mm	PRUNE TO SHAPE
Cr	CITRUS RETICULATA	MANDARIN TREE	3m	1	300mm	SENSORY GARDEN
EF	ECHLUM FASTUOSUM	PURPLE OF MADRERA	1.5m	5	200mm	SENSORY GARDEN
FJ	FATISIA 'JAPONICA'	ARALIA	0.7m	8	300mm	
G	GARDENIA AUGUSTA 'FLORIDA'	GARDENIA	1m	11	200mm	PRUNE TO SHAPE
GBC	GREVILLEA 'BIRTHDAY CANDLES'	DWARF GREVILLEA	0.2m	4	200mm	
GCY	GREVILLEA 'CRIMSON VILLES'	CRIMSON VILLES	1m	36	200mm	
GGC	GREVILLEA 'GIANT CANDLES'	GIANT CANDLES	2.5m	4	200mm	
Gmoon	GREVILLEA 'MOONLIGHT'	CREAM GREVILLEA	3m	2	200mm	
GMP	GREVILLEA 'MISTY PINK'	PINK GREVILLEA	3m	2	200mm	
GSS	GREVILLEA 'SCARLET SPRITE'	RED GREVILLEA	1m	3	200mm	
HM	HYDRANGEA MACROPHYLLA	BLUE HYDRANGEA	1.2m	44	200mm	PRUNE TO SHAPE
HP	HELICHRYSUM PETITOLARE	UCIOCE PLANT	0.7m	21	200mm	PRUNE TO SHAPE
H	HEBE 'PRETTY 'N' PINK'	PRETTY 'N' PINK	0.6m	58	200mm	PRUNE TO SHAPE
Ir	IRELINE HERBSTII	BLOODLEAF	0.5m	7	150mm	SENSORY GARDEN
IA	INDOGOPHERA AUSTRALIS	AUSTRALIAN INDIGO	1.5m	6	200mm	LOCAL SPECIES
LD	LAVANDULA DENTATA	FRANCH LAVANDER	1m	6	150mm	SENSORY GARDEN
LS	LAVANDULA STOECHAS 'AVONVIEW'	SPANISH LAVANDER	0.5m	6	200mm	SENSORY GARDEN
Lor	LOROPETALUM 'CHINA PINK'	CHINA PINK FRINGE FLOWER	1m	19	200mm	PRUNE TO LOW HEDGE

KEY	BOTANICAL NAME	COMMON NAME	MATURE HT	No.	POT SIZE	COMMENTS
COURTYARDS + GROUND FLOOR TERRACE PLANTER						
<b>COURTYARD 1 - LOWER GROUND FLOOR PLANTERS</b>						
Asen	ACER PALMATUM 'SENKAKI'	CORAL BARK MAPLE	0.6m	4	150mm	SENSORY GARDEN
Se	STENOCAARPUS SINJALUS	QLD FIREWHEEL TREE	0.3m	2	150mm	SENSORY GARDEN
BR	BEALICARNEA RECURVATA	PONTYAL PALM	0.7m	57	200mm	
RS	RADERMACHERA SIN. 'SUMMERSCENT'	ASIAN BELL FLOWER	1m	2	150mm	SENSORY GARDEN
	CHAMAEDOREA ATROVIRENS	CASCADE PALM	1.3m	2	200mm	SENSORY GARDEN
B	BUXUS MICROPHYLLA 'JAPONICA'	JAPANESE BOX	0.6m	12	200mm	PRUNE TO BALL SHAPES
Rai	RAPHIDOLEPSIS x INTERMEDIA	HAWTHORN	0.7m	11	200mm	
RA	AZALEA IND. 'ALPHONSE ANDERSON'	PINK AZALEAS	0.9m	22	200mm	PRUNE TO .75m HEIGHT
N	NANDINA 'GULF STREAM'	DWARF SACRED BAMBOO	0.6m	19	200mm	
Alp	ALPINIA CAERULEA	NATIVE GINGER	0.9m	7	300mm	
	PHILODENDRON 'ROJO CONGO'	ROJO CONGO	0.6m	13	200mm	
CWS	CAMELIA 'WHITE SNOW'	WHITE PROSTRATE CAM.	gr/clover	6	200mm	
	CLIVEA MINATA	KAFIR LILY	0.6m	12	150mm	
	NEOMARICA GRACILLIS	WALKING IRIS	0.5m	16	150mm	
	SEDUM 'GOLD MOUND'	GOLD MOUND	gr/clover	48	150mm	
	TRACHELOSPERMUM 'FLAT MAT'	COMPACT STAR JASMINE	gr/clover	24	150mm	

KEY	BOTANICAL NAME	COMMON NAME	MATURE HT	No.	POT SIZE	COMMENTS
<b>GRASSES, ACCENTS + LILIES</b>						
	ACANTHUS MOLLIS	OYSTER PLANTS	0.7m	40	200mm	
Alp	ALPINIA CAERULEA	NATIVE GINGER	1m	18	200mm	
	ALPINIA ZERUMBERT 'VARIEGATA'	VARIATED GINGER	1.4m	26	200mm	
	ANGIOZANTHUS 'LANDSCAPE RED'	RED KANGAROO PAWS	0.8m	12	200mm	
	ANTHROPIDIUM CIRRIATUM	NEW ZEALAND ROCK LILY	0.6m	10	200mm	
	ASPENIUM AUSTRALIS	BIRD NEST FERN	0.7m	20	200mm	
	CORDYLINE FRUTICOSA	PALM LILY	2m	20	200mm	
	CLIVEA MINATA	KAFIR LILY	0.6m	44	150mm	
	CYCAS REVOLUTA	SAGO PALM	1m	3	300mm	
	CYCAS REVOLUTA	SAGO PALM	1m	2	300mm	IN POTS AT ENTRANCE
	CYATHEA AUSTRALIS	BLACK TREE FERN	2m	6	200mm	
	DORYANTHES EXCELSA	GYTHEA LILY	1.2m	81	300mm	
	DIANELLA TASHMANICA 'TAS RED'	FLAG LILY	0.6m	30	150mm	
	DRACAENA ZERUMBERT 'VARIEGATA'	JANET CRAIG	1.4m	58	300mm	
	FURCRAEA FOETIDA 'VARIEGATA'	HAIRY TULIP	1.2m	7	300mm	
	HYMENOCALLIS SPECIOSA	SPIDER LILY	0.7m	28	150mm	
	LOMANDRA 'LIME TUFF'	DWARF MAT RUSH	0.5m	200	150mm	
	PENNISETUM ALOPEC. 'NAFRAY'	NAFRAY SWAMP GRASS	1m	15	150mm	
	PHILODENDRON 'KANADU'	DWARF PHILODENDRON	0.7m	78	200mm	
	PHORIUM TENAX	NEW ZEALAND FLAX	1.2m	17	200mm	
	STRELITZIA REGINIA	PIKE PLAT BIRD OF PARADISE	1m	9	200mm	

KEY	BOTANICAL NAME	COMMON NAME	MATURE HT	No.	POT SIZE	COMMENTS
<b>CLIMBERS, GROUNDCOVERS + PERENNIALS</b>						
	ALTERNANATHERA 'LITTLE RUBY'	DWARF ALTERNANATHERA	0.6m	55	150mm	
	BOUGAINVILLEA 'LITTLE GUY'	DWARF BOUGAINVILLEA	0.5m	18	200mm	
	DICHONDRA REPENS	KIDNEY WEED	g/clover	100	100mm	
	GAZANIA TOMENTOSA	GREY GAZANIA	g/clover	6	150mm	
GKm	GREVILLEA 'JUNIPERINA 'GOLD'	GOLD PROSTRATE GREVILLEA	g/clover	3	150mm	
	HARDENBERGIA 'MEEMA'	SARSAPARILLA VINE	0.2m	8	200mm	
	LIUMONIUM PEREZII	SEA LAVANDER	0.4m	18	150mm	
	MANDEVILLEA 'ALICE DU PONT'	PINK MANDEVILLEA	climber	4	200mm	
	MANDEVILLEA 'SUN PARASOL WHITE'	WHITE MANDEVILLEA	climber	38	200mm	
	MANDEVILLEA 'PARASOL RED'	RED MANDEVILLEA	climber	6	200mm	
	PYROSTEGIA VENUSTA	ORANGE TRUMPET VINE	climber	17	200mm	
	SENECIO SERPENS	BLUE CHALKSTICKS	g/clover	34	200mm	
	STACHYS LANATA	LAMBS EARS	g/clover	10	200mm	
	TRACHELOSPERMUM 'FLAT MAT'	COMPACT ASIAN JASMINE	g/clover	56	150mm	
	VIOLA ODORATA	VIOLA	g/clover	34	150mm	

## PLANTING SCHEDULE ON-SLAB PLANTERS + COURTYARDS

KEY	BOTANICAL NAME	COMMON NAME	MATURE HT	NO	POT SIZE	COMMENTS
COURTYARDS + GROUND FLOOR TERRACE PLANTER						
<b>COURTYARD 1 - LOWER GROUND FLOOR PLANTERS</b>						
Asen	ACER PALMATUM 'SENKAKI'	CORAL BARK MAPLE	5m	6	100 litre	IN MOUNDED PLANTER
Se	STENOCAARPUS SINJALUS	QLD FIREWHEEL TREE	5m	2	75 litre	IN MOUNDED PLANTER
BR	BEALICARNEA RECURVATA	PONTYAL PALM	2.5m	2	100 litre	2m OUT OF POT
RS	RADERMACHERA SIN. 'SUMMERSCENT'	ASIAN BELL FLOWER	2.5m	16	300mm	PRUNE TO THICKEN
	CHAMAEDOREA ATROVIRENS	CASCADE PALM	1.1m	15	300mm	
B	BUXUS MICROPHYLLA 'JAPONICA'	JAPANESE BOX	0.6m	12	200mm	PRUNE TO BALL SHAPES
Rai	RAPHIDOLEPSIS x INTERMEDIA	HAWTHORN	0.7m	11	200mm	
RA	AZALEA IND. 'ALPHONSE ANDERSON'	PINK AZALEAS	0.9m	22	200mm	PRUNE TO .75m HEIGHT
N	NANDINA 'GULF STREAM'	DWARF SACRED BAMBOO	0.6m	19	200mm	
Alp	ALPINIA CAERULEA	NATIVE GINGER	0.9m	7	300mm	
	PHILODENDRON 'ROJO CONGO'	ROJO CONGO	0.6m	13	200mm	
CWS	CAMELIA 'WHITE SNOW'	WHITE PROSTRATE CAM.	gr/clover	6	200mm	
	CLIVEA MINATA	KAFIR LILY	0.6m	12	150mm	
	NEOMARICA GRACILLIS	WALKING IRIS	0.5m	16	150mm	
	SEDUM 'GOLD MOUND'	GOLD MOUND	gr/clover	48	150mm	
	TRACHELOSPERMUM 'FLAT MAT'	COMPACT STAR JASMINE	gr/clover	24	150mm	

KEY	BOTANICAL NAME	COMMON NAME	MATURE HT	NO	POT SIZE	COMMENTS
<b>COURTYARD 2 - LOWER GROUND FLOOR PLANTERS</b>						
HF	HOWEA FORSTERIANA	KENTIA PALM	4m	4	100 litre	IN MOUNDED PLANTER
RS	RADERMACHERA SIN. 'SUMMERSCENT'	ASIAN BELL FLOWER	2.5m	4	300mm	PRUNE TO THICKEN
Lor	LOROPETALUM 'CHIN. 'CHINA DOLL'	JANET CRAIG	2m	12	300mm	
Rai	RAPHIDOLEPSIS x INTERMEDIA	HAWTHORN	0.7m	32	200mm	
	CORDYLINE 'PINK DIAMOND' PALM LILY	PINK DIAMOND PALM LILY	1.4m	16	300mm	
B	BUXUS MICROPHYLLA 'JAPONICA'	JAPANESE BOX	0.6m	36	200mm	PRUNE TO THICKEN
	ALCANTERA 'SILVER PLUM'	SILVER PLUM BROMELIAD	0.7m	4	300mm	
Ir	IRELINE HERBSTII	RED BLOODLEAF	0.6m	12	200mm	
	SYNGONIUM PODOPH. 'GREEN PIXIE'	DWARF ARROWHEAD	0.2m	36	150mm	
	SENECIO SERPENS	BLUE CHALKSTICKS	gr/clover	16	150mm	

KEY	BOTANICAL NAME	COMMON NAME	MATURE HT	NO	POT SIZE	COMMENTS
<b>COURTYARD 3 - LOWER GROUND FLOOR PLANTERS</b>						
KP	KOEBERUTERIA PANICULATA	GOLDEN RAIN TREE	7m	2	100 litre	IN DEEP PLANTER
RS	RADERMACHERA SIN. 'SUMMERSCENT'	ASIAN BELL FLOWER	2.5m	5	300mm	700mm DEEP PLANTER
Alp	ALPINIA ZERUMBERT 'VARIEGATA'	VARIATED GINGER	1m	6	300mm	
PX	PHILODENDRON 'KANADU'	DWARF PHILODENDRON	0.6m	11	200mm	
PC	PHILODENDRON 'ROJO CONGO'	ROJO CONGO	0.6m	13	200mm	
G	GARDENIA AUGUSTA 'FLORIDA'	GARDENIA	0.7m	26	200mm	
B	BUXUS MICROPHYLLA 'JAPONICA'	JAPANESE BOX	0.6m	13	200mm	PRUNE TO BALL SHAPES
	DORYANTHES EXCELSA	GYTHEA LILY	1m	4	300mm	
AC	ANTHROPIDIUM CIRRIATUM 'MAT. BAY'	NEW ZEALAND ROCK LILY	0.7m	10	200mm	
	EUPHORBIA 'SPARKLES'	SPARKLES	gr/clover	14	150mm	

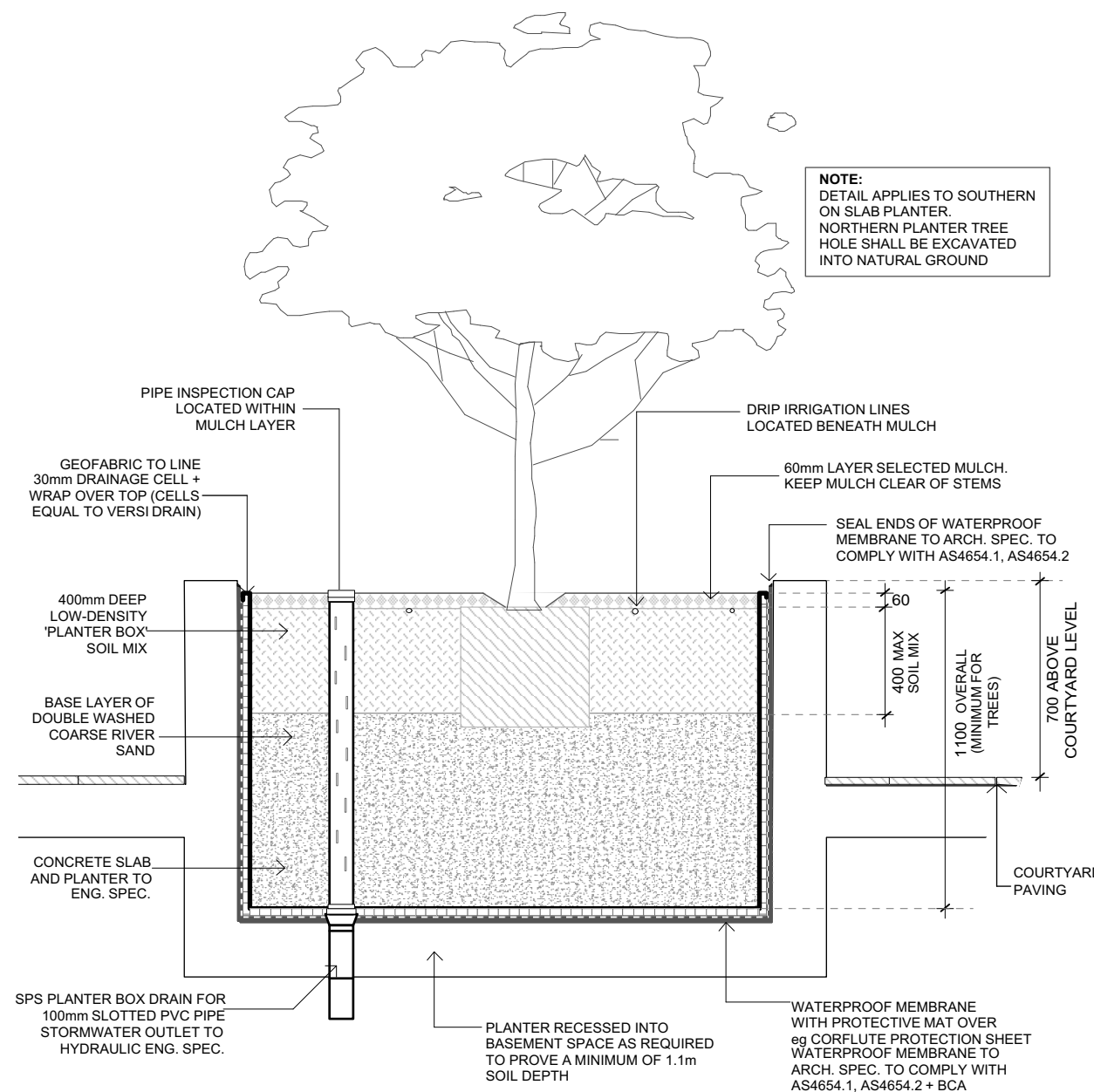
KEY	BOTANICAL NAME	COMMON NAME	MATURE HT	NO	POT SIZE	COMMENTS
<b>COURTYARD 4 - LOWER GROUND FLOOR PLANTERS</b>						
HF	HOWEA FORSTERIANA	KENTIA PALM	7m	1	100 litre	APPROX. 2M TRUNK
	PHILODENDRON 'ROJO CONGO'	ROJO CONGO	0.6m	6	200mm	
	TRACHELOSPERMUM TRICOLOR	VARIATED STAR JASMINE	gr/clover	9	150mm	

KEY	BOTANICAL NAME	COMMON NAME	MATURE HT	NO	POT SIZE	COMMENTS
<b>COURTYARD 5 - LOWER GROUND FLOOR PLANTERS</b>						
BN	BETULA NIGRA	TROPICAL BIRCH	6m	2	100 litre	AT GRADE PLANTER
	ANTHROPIDIUM CIRRIATUM	NEW ZEALAND ROCK LILY	0.7	18	150mm	SCATTERED PLANTING
	EUPHORBIA 'SPARKLES'	SPARKLES	gr/clover	20	150mm	SCATTERED PLANTING

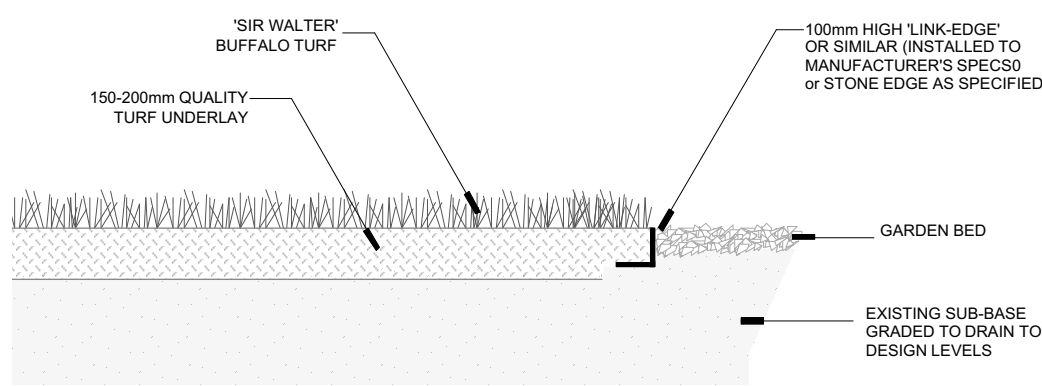
KEY	BOTANICAL NAME	COMMON NAME	MATURE HT	NO	POT SIZE	COMMENTS
<b>GROUND FLOOR TERRACE PLANTER</b>						
RS	RADERMACHERA SINICA/SUMMERSCENT	ASIAN BELL FLOWER	2.5m	19	300mm	700mm DEEP PLANTER
	CARISSA MACROCARPA	DESERT STAR	0.7m	80	200mm	IN MOUNDED PLANTER
	CYCAS REVOLUTA	CYCAD	1m	4	300mm	IN MOUNDED PLANTER
	MANDEVILLEA 'PARASOL WHITE'	WHITE MANDEVILLEA	gr/clover	22	200mm	NOTE
	MANDEVILLEA 'ALICE DU PONT'	PINK MANDEVILLEA	gr/clover	22	200mm	REFER TO SHEET L03 FOR DETAILED PLANTING PLAN

## GENERAL SPECIFICATIONS

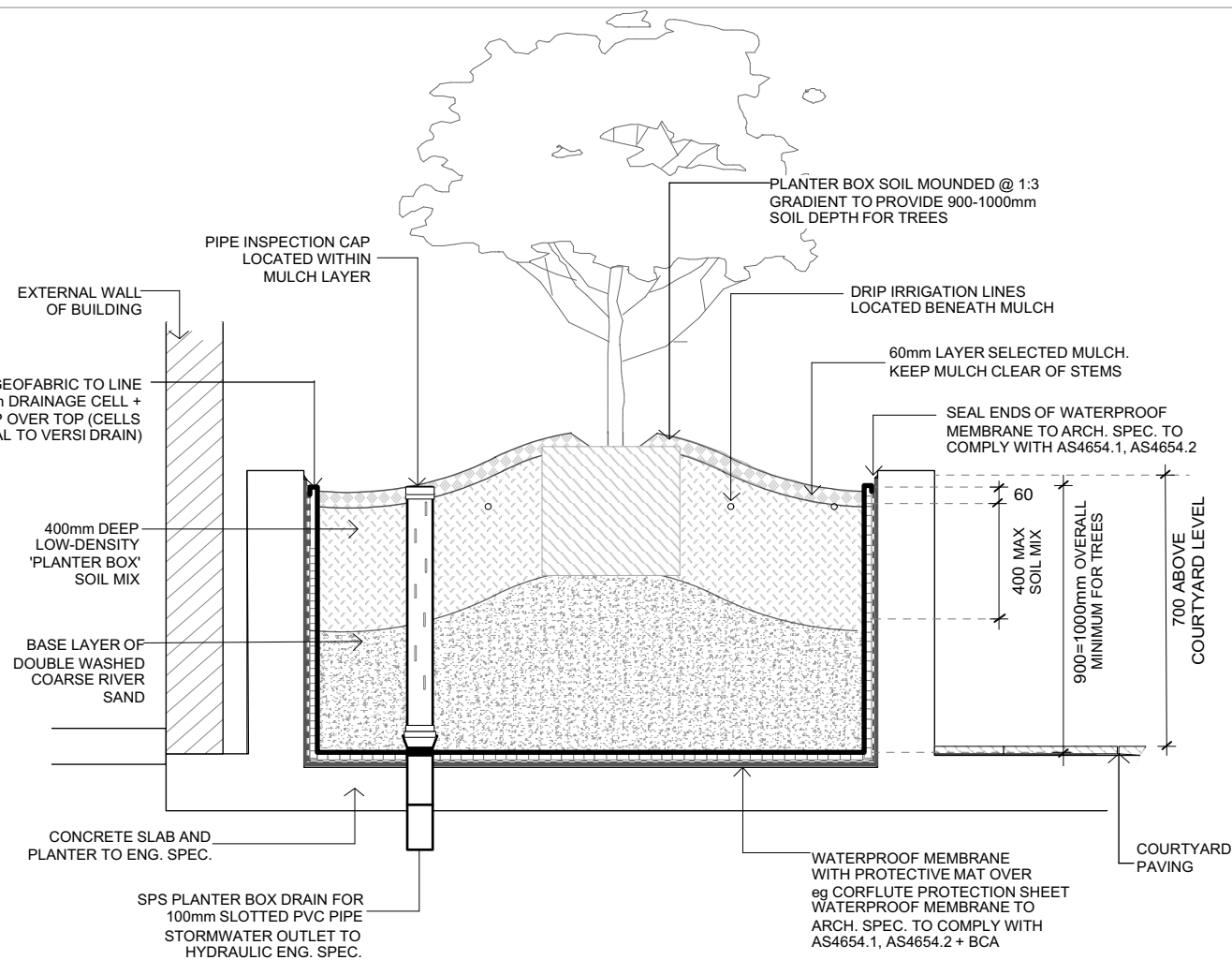




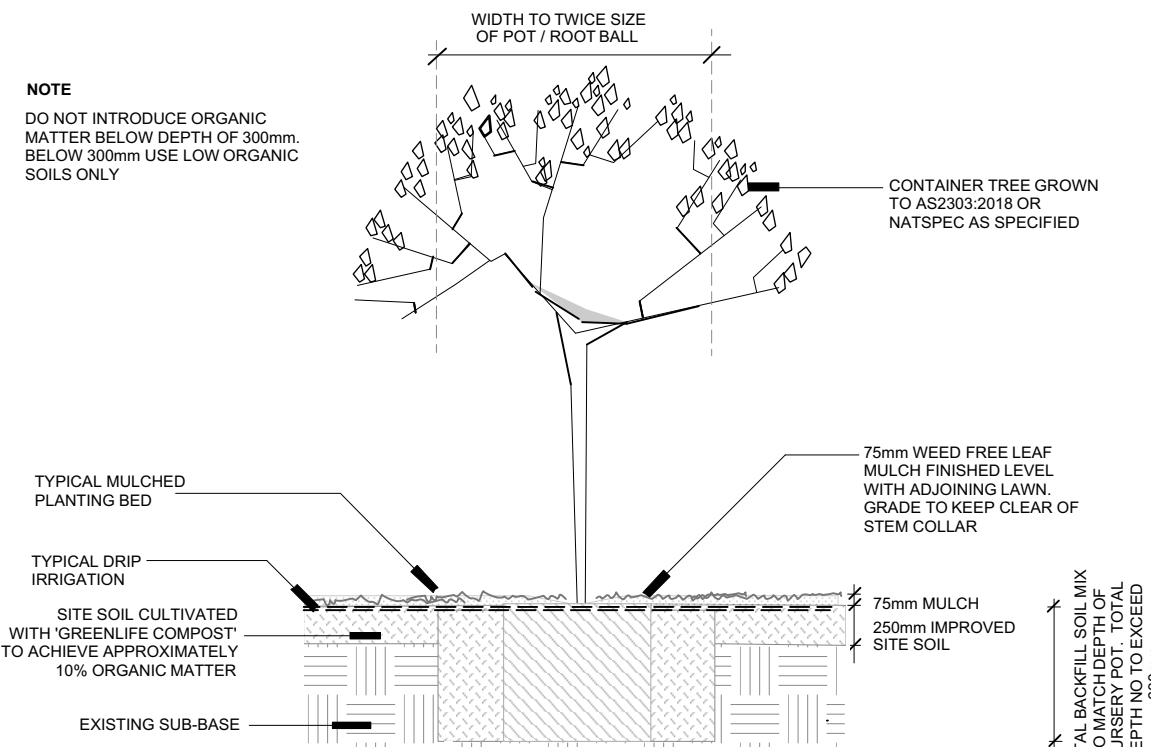
**01 TYPICAL SECTION COURTYARD 3 ON-SLAB TREE PLANTER**  
PLANTING ON SLAB - 1100mm TYPICAL MINIMUM SOIL DEPTH  
(DEPTH TO ARCH SPEC. CONSTRUCTION DESIGN TO STRUCTURAL / HYDRAULIC ENGINEERS SPECIFICATIONS)  
SCALE 1:25



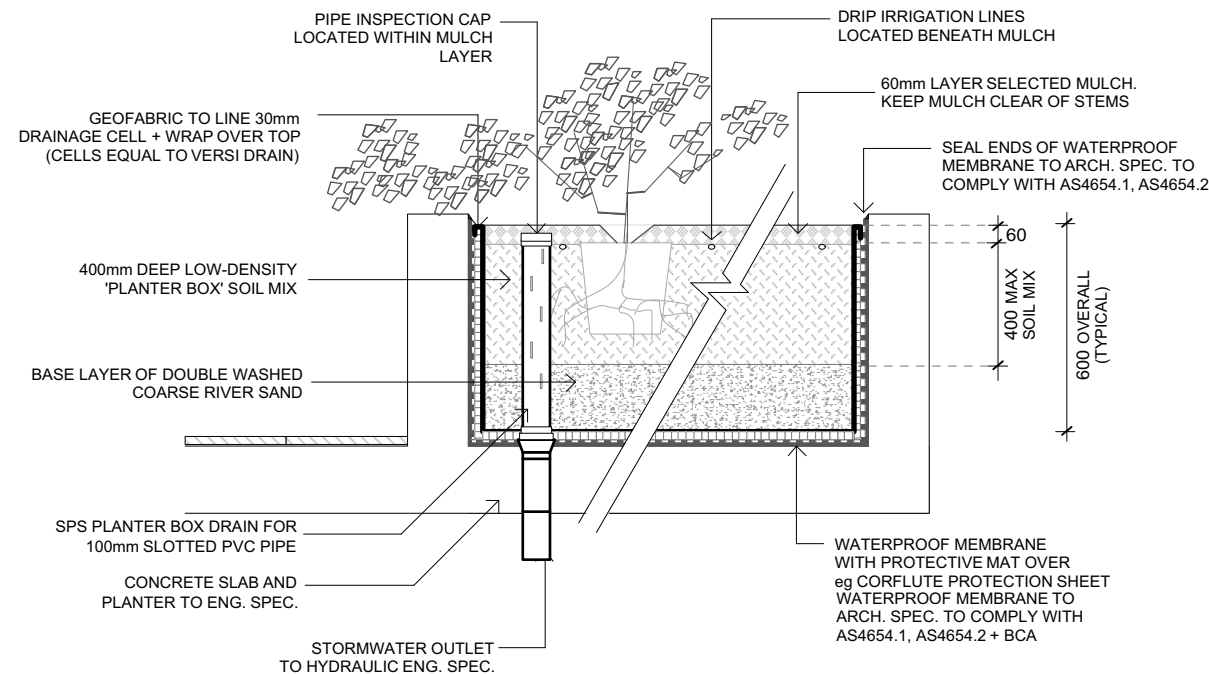
**05 TYPICAL DETAIL LAWN**  
SCALE 1:20



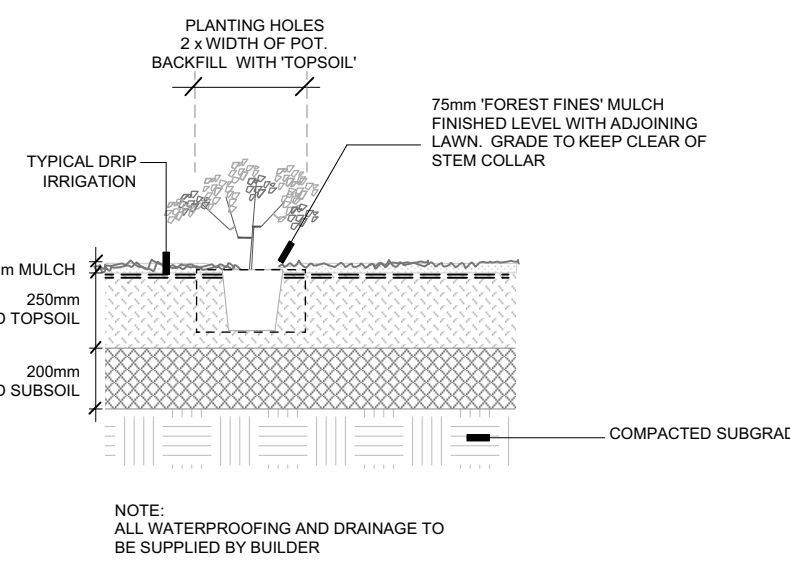
**02 TYPICAL SECTION COURTYARD 1 SMALL TREE PLANTERS**  
PLANTING ON SLAB - 650-1000mm TYPICAL SOIL DEPTH  
(DEPTH TO ARCH SPEC. CONSTRUCTION DESIGN TO STRUCTURAL / HYDRAULIC ENGINEERS SPECIFICATIONS)  
SCALE 1:25



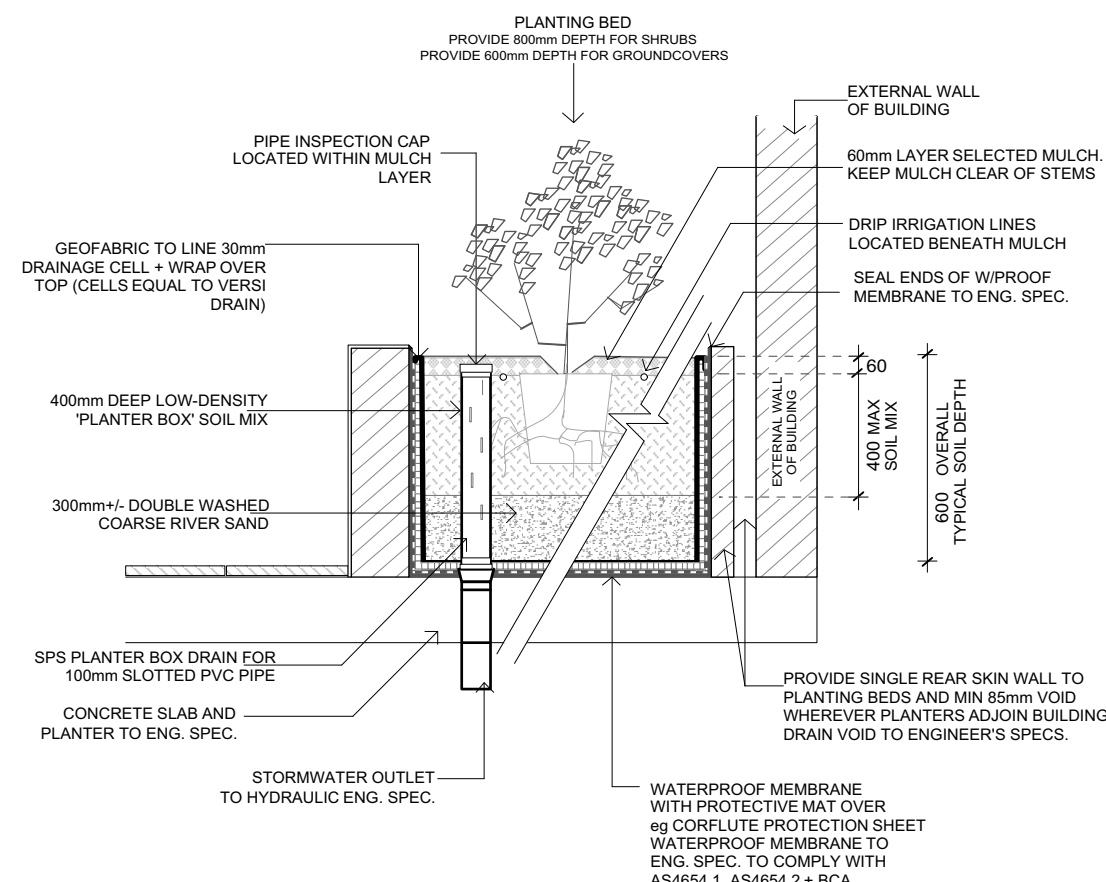
**06 TYPICAL TREE PLANTING**  
PLANTING BED AT NATURAL GRADE  
SCALE 1:25



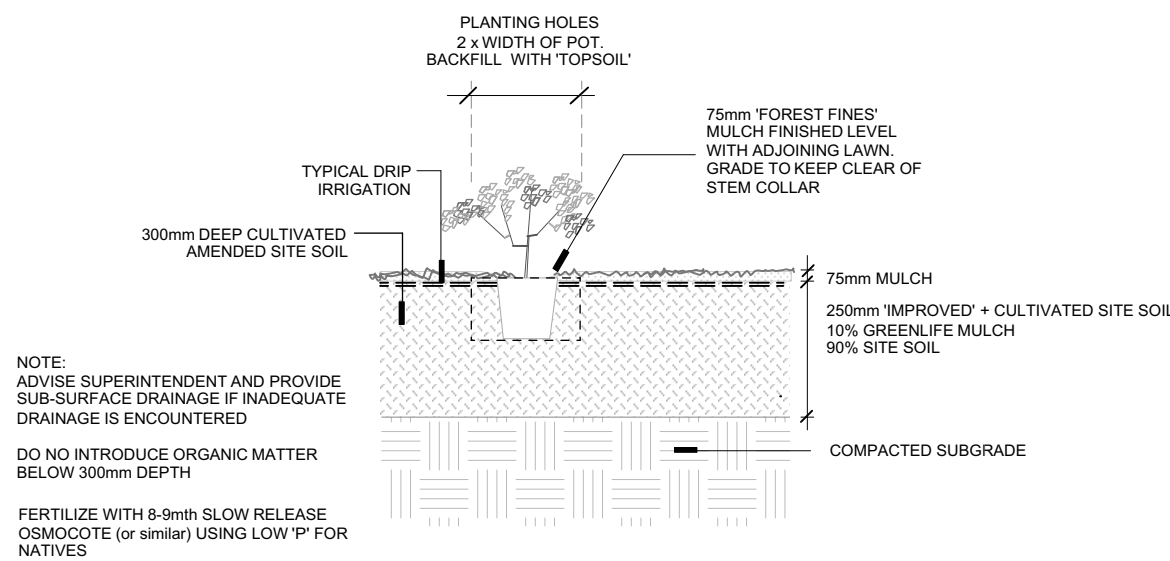
**03 TYPICAL SECTION ON-SLAB SHRUB PLANTERS**  
PLANTING ON SLAB - 600mm SOIL DEPTH  
(DEPTH TO ARCH SPEC. CONSTRUCTION DESIGN TO STRUCTURAL / HYDRAULIC ENGINEERS SPECIFICATIONS)  
SCALE 1:25



**07 PLANTING BED PREPARATION IMPORTED SOIL**  
TYPICAL SECTION  
SCALE 1:25

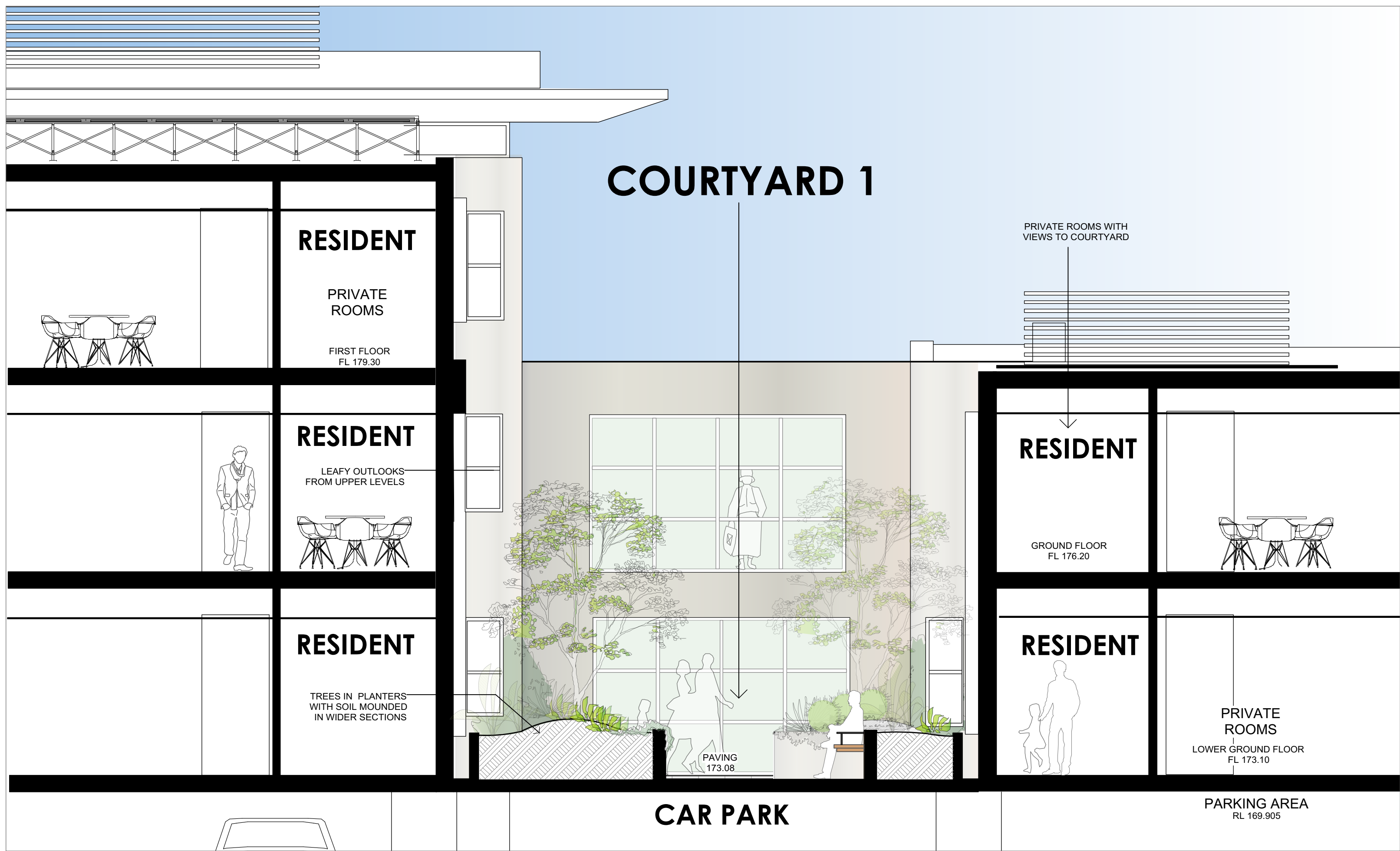


**04 TYPICAL DETAIL SHRUB PLANTER ADJOINING EXTERNAL WALLS**  
PLANTING ON SLAB - 600mm TYPICAL SOIL DEPTH  
SCALE 1:25



**08 TYPICAL PLANTING BED PREPARATION SITE SOIL**  
TREE + SHRUBS PLANTING ON GRADE - IMPROVED SITE SOIL  
SCALE 1:25

**09 SECTION - COURTYARD 1**  
DETAIL THROUGH TREE PLANTER  
SCALE 1:50



AMENDMENTS



© FRESH DOBSON LANDSCAPE ARCHITECTURE  
BUILDER TO CHECK ALL DIMENSIONS PRIOR TO CONSTRUCTION  
WHERE ANY DISCREPANCY EXISTS BETWEEN FIGURED AND SCALED DIMENSIONS, THE FIGURED DIMENSIONS SHALL PREVAIL.

CUSTOMER  
Thompson Health Care

PROJECT  
AGED CARE FACILITY  
65-71 BURDETT STREET  
HORNSBY

DRAWING

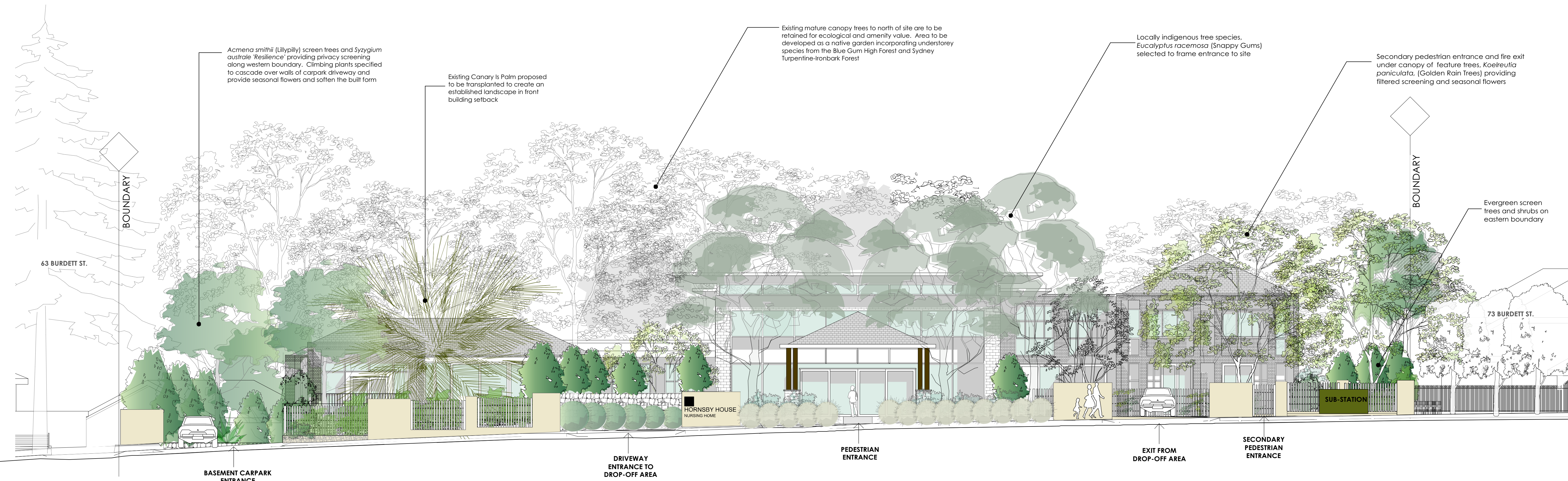
**DETAILS**

SCALE shown  
DATE 5.3.20  
ISSUE DA  
SHEET 5 of 6  
REVISION Rev A 22.10.20

JOB  
1919

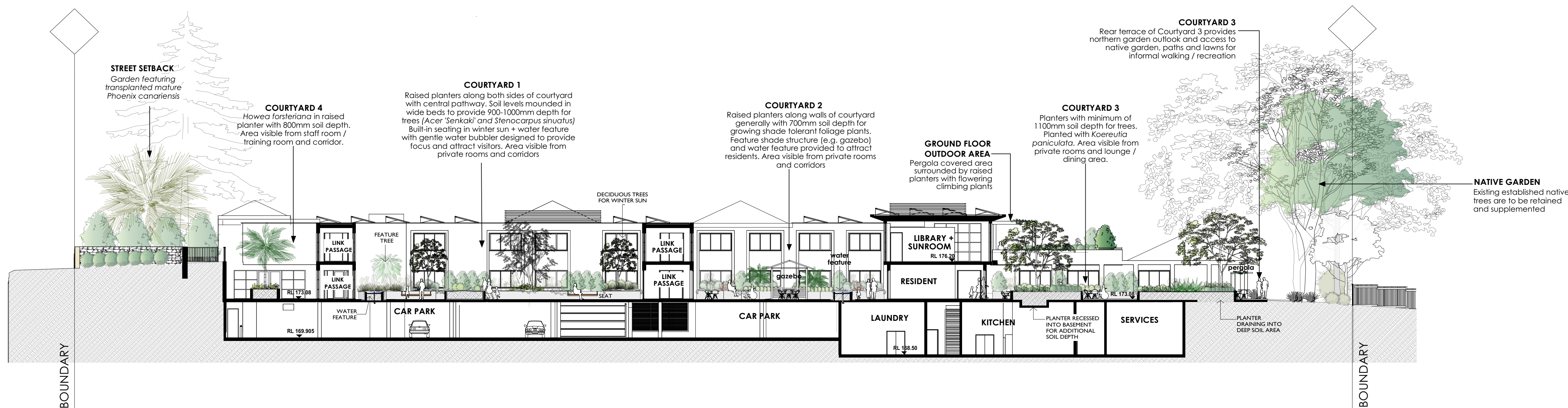
DWG NO  
DA-L05A





## BURDETT STREET FRONT ELEVATION

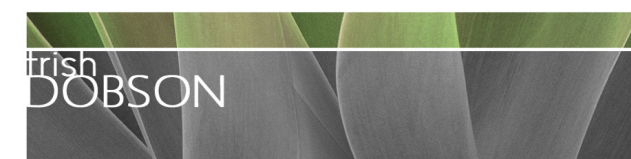
SCALE 1:100 @ A1  
0m 1m 2m 3m 4m 5m



## LONG SECTION A (NORTH-SOUTH)

SHOWING LOWER GROUND FLOOR COURTYARDS

SCALE 1:200 @ A1  
0m 2m 4m 6m 8m 10m



trish dobson landscape architecture  
6/17 AVA/200 PRINCE AVENUE, ROSE 2107  
0408 983020  
trish@trishdobson.com.au  
TRISH DOBSON  
HORNBY HOUSE  
REGISTERED LANDSCAPE ARCHITECT #450  
ABN 57 241 486 158

DEVELOPMENT APPLICATION  
HORNSBY HOUSE  
Proposed Aged Care Facility

65-71 BURDETT STREET HORNSBY

## STREET ELEVATION + LONG SECTION

1:100 + 1:200 @ A1 SCALE  
6.3.20 DATE  
1912 JOB  
DA - Revision A 22.10.20 ISSUE  
6 of 6 SHEET

1912/ DA-L06A DWG